

**GENERAL NOTES:**

- 1 PROVIDE BACKING IN WALL FOR GRAB BAR SUPPORTS.
- 2 PROVIDE BACKING IN WALL FOR DRINKING FOUNTAIN.
- 3 PROVIDE BACKING IN WALL FOR WALL HUNG LAVATORY.
- 4 PAPER TOWEL DISPENSER.
- 5 SURFACE MOUNT ELECTRICAL PANELS.
- 6 PHONE BOARD, 4'X8'X3/4", MOUNTED HORIZONTALLY BOTTOM AT 36" AFF. PAINT B/M #191 WITH FIRE RETARDENT ADDITIVE AS PER MFG. SPECS.
- 7 POINT TO POINT PNEUMATIC TUBE SYSTEM TO ATM KIOSK. SEE MFG. SPECS FOR REQUIREMENTS.
- 8 PNEUMATIC SYSTEM FOR DRIVE-THRU LANES. SEE MFG. SPECS FOR REQUIREMENTS.
- 9 DRIVE-THRU DEAL DRAWER, SEE MFG. SPECS.
- 10 ELECTRICAL PLUG MOLD IN BACKSPLASH, SEE DETAILS.
- 11 REMOTE DRIVE-THRU RECEIVER. SEE MFG. SPECS. FOR POSITIONING, CONDUIT & BOLLARD REQUIREMENTS. BOLLARDS ARE CONC. FILLED 4" P.V.C. W/ CAPS.
- 12 4" CHASE WALL TO ALLOW FOR PLUMBING.

**VAULT NOTES:**

- 1) LAMINATE GYP. BD. TO INTERIOR OF VAULT EXCEPT AT EAST WALL, INSTALL OVER METAL FURRING TO ALLOW FOR CONDUIT.
- 2) FIVE SIDED MODULAR VAULT ATTACHED TO INBEDS IN THICKENED CONCRETE SLAB.

**FIRST FLOOR  
PLAN VIEW**  
 SCALE: 1/4"=1'-0"

10/10/02

REVISION  
 \_\_\_\_\_  
 \_\_\_\_\_  
 \_\_\_\_\_  
 \_\_\_\_\_  
 \_\_\_\_\_  
 \_\_\_\_\_

\_\_\_\_\_  
 \_\_\_\_\_  
 \_\_\_\_\_  
 \_\_\_\_\_  
 \_\_\_\_\_  
 \_\_\_\_\_

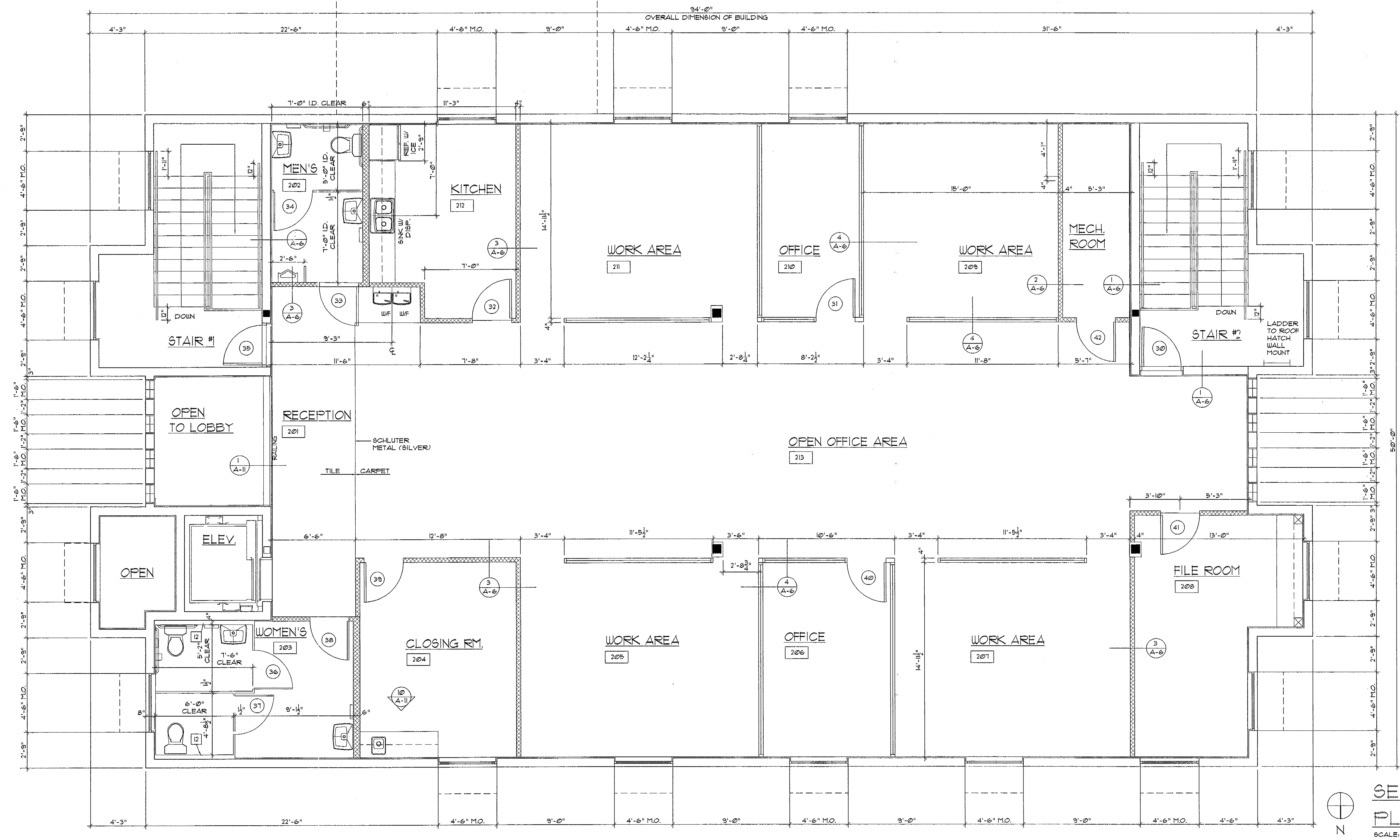
**GLACE & COMPANY**  
 INCORPORATED  
 1006 N. FEDERAL HIGHWAY  
 LAKE WORTH, FLORIDA 33460  
 561.585.5564 FAX 561.585.6285

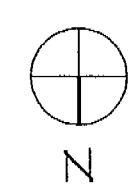
**STERLING BANK**  
 441 AND SOUTHERN BLVD.  
 ROYAL PALM BEACH, FLORIDA

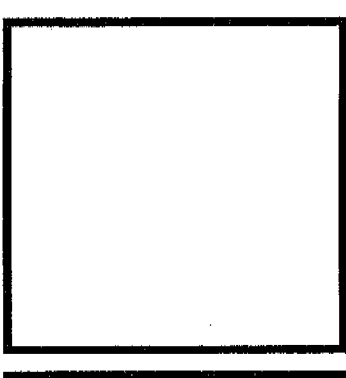
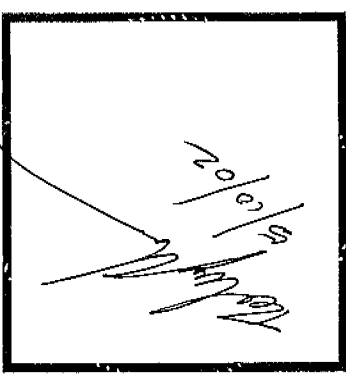
DATE: 9-10-02  
 SCALE: 1/4"=1'-0"  
 DRAWN BY: JFL  
 APPROVED BY: \_\_\_\_\_

**FIRST FLOOR**

THIS DRAWING IS THE PROPERTY OF GLACE & COMPANY, INC. AND IS NOT TO BE REPRODUCED OR COPIED IN WHOLE, OR IN PART OR LENDED IN ANY WAY WITHOUT THE WRITTEN PERMISSION OF GLACE & COMPANY, INC.




**SECOND FLOOR**  
**PLAN VIEW**  
 SCALE: 1/4" = 1'-0"



REVISION

**GLANCE & COMPANY**  
 INCORPORATED  
 1006 N. FEDERAL HIGHWAY  
 LAKE WORTH, FLORIDA 33460  
 561.585.5564 FAX 561.585.6285

**STERLING BANK**  
 441 AND SOUTHERN BLVD.  
 ROYAL PALM BEACH,  
 FLORIDA

DATE:	5-10-02
SCALE:	1/4" = 1'-0"
DRAWN BY:	JPL
APPROVED BY:	JPL

SHEET  
**SECOND FLOOR**